

# Redhedge ICAV

## Synergy Total Return Fund

Monthly newsletter – Month ending 31 October 2023

For professional investors only. Not directed at retail investors

### Fund overview

The Synergy Total Return Fund was launched to leverage on the Redhedge flagship Relative Value investment strategy, allowing for a higher volatility profile and risk tolerance, enabling the team to implement higher return seeking sub-strategies with a more extensive use of credit derivatives and other financial instruments.

Whilst seeking to generate higher returns, the Synergy Total Return Fund is managed with the same investment approach as the Redhedge's flagship strategy seeking to minimising drawdowns and focusing on capital preservation.

### Performance

Source: Internal data

NAV	116.03	
Current Month	0.97%	1 Year Return (rolling) 16.03%
YTD	13.52%	Max Drawdown (Monthly) -0.23%
Inception	16.03%	Positive Mths Since Incept. 10
Annualized Rtrn Since Inc.	17.59%	Negative Mths Since Incept. 1

### Ratios

Source: Internal data

Sharpe (inception)*	5.02	* RFR 0.00%
Std.Dev. (of annualized rtn)	3.50	

### Fund Information

Source: Internal data

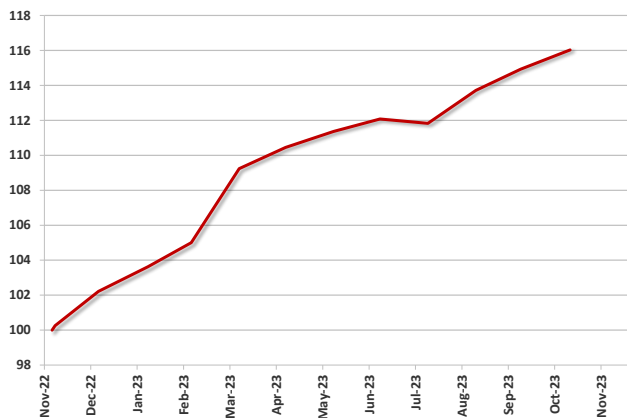
ISIN	IE00074WAWF2	Performance Fee	25.00%
Bloomberg Code	RHSYNNE	Redemption	Monthly
Inception Date	30 November 2022	Min. Subscription	100k EUR
Fund AUM	48mm EUR	Fund Manager	Andrea Seminara
Management Fee	1.00%		

### Monthly Returns Since Inception

Year	Jan	Feb	Mar	Apr	May	Jun	Jul	Aug	Sep	Oct	Nov	Dec	Year Tot.
2022												2.21%	2.21%
2023	1.38%	1.32%	4.03%	1.11%	0.83%	0.65%	-0.23%	1.69%	1.06%	0.97%			13.52%

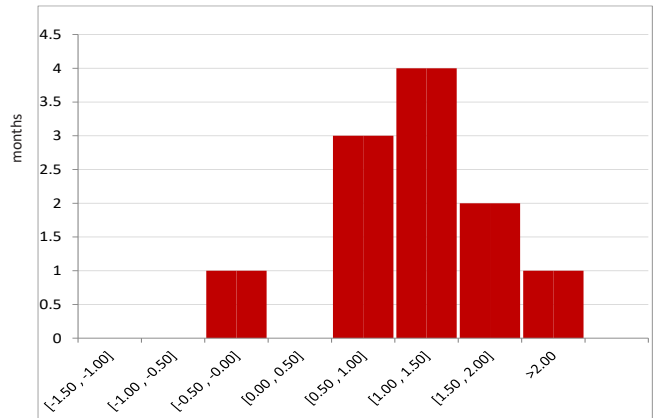
Source: Internal data

### NAV Cumulative Performance Since Inception



Source: Internal data

### Histogram of Monthly Returns (11 months)



% return

Source: Internal data

## DISCLAIMER

This information is being communicated by Redhedge AM LLP, which is authorised and regulated by the Financial Conduct Authority. This material is for information only and does not constitute an offer or recommendation to buy or sell any investment, or subscribe to any investment management or advisory service. It is only directed and may only be distributed to persons who are Professional Clients or Eligible Counterparties and is not, under any circumstances, intended for distribution to the general public.

With investment, your capital is at risk and the value of an investment and the income from it can go up as well as down, it may be affected by exchange rate variations and you may not get back the amount invested. Past performance is not necessarily a guide to future performance and where past performance is quoted gross then investment management charges as well as transaction charges should be taken into consideration, as these will affect your returns. Any tax allowances or thresholds mentioned are based on personal circumstances and current legislation, which is subject to change.

We do not represent that this information, including any third party information, is accurate or complete and it should not be relied upon as such. Opinions expressed herein reflect the opinion of Redhedge AM LLP and are subject to change without notice. No part of this document may be reproduced in any manner without the written permission of Redhedge AM LLP, however recipients may pass on this document but only to others falling within this category. This information should be read in conjunction with the relevant fund documentation which may include the fund's prospectus, simplified prospectus or supplement documentation and if you are unsure if any of the products and portfolios featured are the right choice for you, please seek independent financial advice provided by regulated third parties.

### For Swiss investors:

The domicile of the Fund is Ireland. The Representative of the Fund in Switzerland is OpenFunds Investment Services AG, with its registered office at Seefeldstrasse 35, CH-8008 Zurich, Tel +41 44 500 31 08, [www.open-funds.ch](http://www.open-funds.ch). Società Bancaria Ticinese SA, Piazza Collegiata 3, 6501 Bellinzona, Tel. +41 91 821 51 21, Fax. + 41 91 825 66 18, [www.bancaria.ch](http://www.bancaria.ch). The distribution of Shares of the Fund in Switzerland must be made exclusively to Qualified Investors. The place of performance and jurisdiction for the Shares of the Fund distributed in Switzerland is at the registered office of the Representative. Publications to Swiss investors in respect of the Shares of the Fund are effected on the electronic platform [www.fundinfo.com](http://www.fundinfo.com).

**RED HEDGE**

Investor services:

**+44 (0)20 3940 5626**

Email:

[info@redhedge.com](mailto:info@redhedge.com)

Website:

[www.redhedge.com](http://www.redhedge.com)