

Redhedge ICAV

RV Corporate Bonds Fund

Weekly newsletter – Week ending January 30th, 2024

For professional investors only. Not directed at retail investors

Performance

Source: Internal data

NAV	120.08	Annualized Rtrn Since Incept.	2.52%
Week Return	-0.02%	Max Drawdown (Weekly)	-0.38%
Current Month Return	0.27%	Positive Months Since Incept.	69
YTD Return	0.27%	Negative Months Since Incept.	20
1-Year Rolling Return	1.21%		
Rtrn Since Incept.	20.08%		

Fund overview

Redhedge focuses on managing liquid alternative Relative Value Credit Market-Neutral strategies. Our strategy is founded on the fact that short-term price volatility can temporarily lead to the relative mispricing in credit markets leading to relative value trading opportunities. Our core investment philosophy is to maintain consistency and discipline regardless of market direction, volatility or conditions. By maintaining this disciplined approach, we can minimize the volatility and potential negative drawdowns. The investment process consists of idea generation and relative value credit selection. Portfolio construction is driven by the team's quantitative approach combined with fundamental credit analysis. This repeatable and disciplined process is focused on identifying the most attractive relative value credit opportunities across the European credit universe.

Ratios

Source: Internal data

Sharpe Ratio (Since Inception)	2.62
Std.Dev. of Annualized Rtrn (Since Inception)	0.96

Fund Information

Source: Internal data

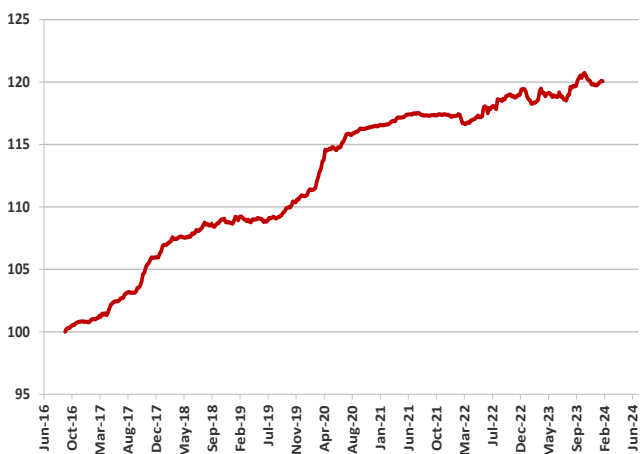
ISIN	IE00BD1R9143	Management Fee	1.00%
Bloomberg Code	RRVCBAE ID	Performance Fee	25.00%
Inception Date	23 Sept 2016	Redemption	Weekly
Fund AUM	125mm EUR	Min. Subscription	100K EUR
Fund Manager	Andrea Seminara		

Monthly Returns Since Inception

Year	Jan	Feb	Mar	Apr	May	Jun	Jul	Aug	Sep	Oct	Nov	Dec	Year Tot.
2016									0.16%	0.39%	0.23%	0.01%	0.80%
2017	0.17%	0.10%	0.39%	0.07%	0.89%	0.22%	0.40%	0.04%	0.38%	1.59%	0.75%	0.02%	5.13%
2018	0.93%	0.21%	0.25%	0.17%	-0.06%	0.25%	0.37%	0.34%	0.06%	0.04%	0.32%	-0.34%	2.57%
2019	0.42%	0.01%	-0.16%	0.01%	0.05%	-0.21%	0.37%	-0.02%	0.38%	0.46%	0.44%	0.24%	2.01%
2020	0.48%	0.12%	1.91%	0.80%	0.18%	0.02%	0.87%	-0.02%	0.32%	0.08%	0.13%	0.05%	5.03%
2021	0.08%	0.06%	0.23%	0.24%	0.20%	0.09%	0.01%	-0.15%	0.02%	-0.01%	0.07%	-0.11%	0.72%
2022	-0.01%	-0.20%	-0.23%	0.21%	0.16%	0.66%	0.06%	0.44%	0.03%	0.36%	-0.11%	0.45%	1.82%
2023	-0.72%	-0.17%	0.94%	-0.36%	-0.10%	0.19%	-0.50%	0.83%	0.46%	0.52%	-0.53%	-0.28%	0.26%
2024	0.27%												0.27%

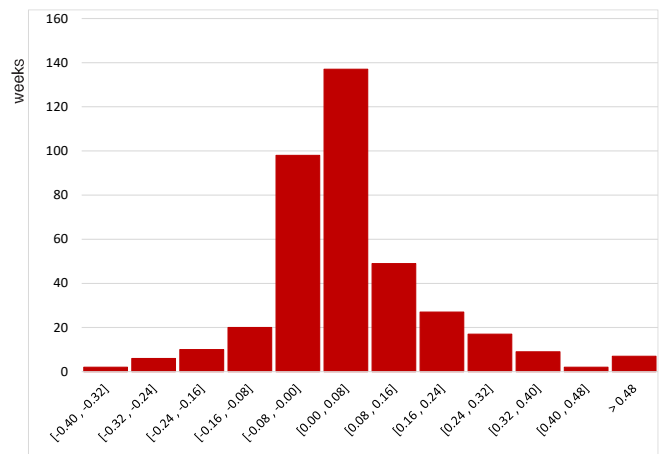
Source: Internal data

NAV Price Performance Since Inception



Source: Internal data

Histogram of Weekly Returns (384 weeks)



Source: Internal data

DISCLAIMER

For Swiss investors:

The domicile of the Fund is Ireland. The Representative of the Fund in Switzerland is OpenFunds Investment Services AG, with its registered office at Seefeldstrasse 35, CH-8008 Zurich, Tel +41 44 500 31 08, www.open-funds.ch. Società Bancaria Ticinese SA, Piazza Collegiata 3, 6501 Bellinzona, Tel. +41 91 821 51 21, Fax. + 41 91 825 66 18, www.bancariach.ch. The distribution of Shares of the Fund in Switzerland must be made exclusively to Qualified Investors. The place of performance and jurisdiction for the Shares of the Fund distributed in Switzerland is at the registered office of the Representative. Publications to Swiss investors in respect of the Shares of the Fund are effected on the electronic platform www.fundinfo.com.

RED HEDGE

Investors services:
Email:
Website:

+44 (0)20 3940 5626
info@redhedge.com
www.redhedge.com

Monthly Comment - Month ending 31st January 2024

January has been relatively uneventful for spreads and yields, with both trading at a relatively tight range. While investors were focused on deploying capital into credit (adding duration and moving credit exposure from low-to higher quality) central bankers have been busy trying to talk down market participants expectations of timing (and extent) of rate cuts. The result was an outperformance of IG credit relative to HY and issuance across the credit spectrum being absorbed easily and with little to no premium to secondaries. The Itraxx Main IG index ended the month slightly tighter by 1.5bps to close at just under 60bps spread and the Itraxx XOVER HY index ended the month roughly unchanged at 326bps spread. We saw cash outperform synthetics as we saw the IEAC (IG Corporate) ETF close the month 5bps tighter.

We entered the new year after a very strong rally in credit spreads in December due to multiple reasons, but mainly from very strong technicals and market expectations of aggressive and faster rate cuts in 2024. Even now, close to 6 cuts in priced in 2024 in both Europe and US, as the market expects inflation to continue to drift lower and that central banks would need to act faster. Very strong inflows into both active and passive funds also contributed to the rally in credit. However, we also saw that when spreads approached very tight levels, there was more resistance for spreads to go tighter. After all, at these tight spread levels (which are the tightest levels since 2022) we think that the risk-reward for being outright long is very skewed to the downside as the market is pricing in only good news at the moment. As such, we are adopting a more cautious stance.

Very constructive markets also contributed to compression in credit. We see especially in Corporate Hybrids where the Subordinated Hybrid bonds have compressed towards their Senior Unsecured bonds. At these levels, we like decompression trades, because we think that the downside is low, and we would be able to take advantage of the upside convexity when volatility will eventually return to the market. For the same reasoning, we also like IG over HY, and Senior debt over Subordinated debt as we look to implement this trade via a variety of expressions to diversify our portfolio. We think that while it is possible for spreads to continue to tighten as investors have no macro worries, we don't think market would move in a straight line tighter forever. As we saw on the last day of January, the calm didn't last, and much higher than expected loan loss provisions at NYCB (New York Community Bancorp), on the back of CRE exposure, lead to wild swings in US Regional Bank stocks in the US especially with SVB (Silicon Valley Bank) & CS (Credit Suisse) still fresh in investors' memories. At first glance, the issues at NYCB appear to be idiosyncratic, but clearly there is concern that other financial institutions will have to take similar losses on their Real Estate loan portfolios.

Redhedge Investment Team

DISCLAIMER

This information is being communicated by Redhedge AM LLP, which is authorised and regulated by the Financial Conduct Authority. This material is for information only and does not constitute an offer or recommendation to buy or sell any investment, or subscribe to any investment management or advisory service. It is only directed and may only be distributed to persons who are Professional Clients or Eligible Counterparties and is not, under any circumstances, intended for distribution to the general public.

With investment, your capital is at risk and the value of an investment and the income from it can go up as well as down, it may be affected by exchange rate variations and you may not get back the amount invested. Past performance is not necessarily a guide to future performance and where past performance is quoted gross then investment management charges as well as transaction charges should be taken into consideration, as these will affect your returns. Any tax allowances or thresholds mentioned are based on personal circumstances and current legislation, which is subject to change.

We do not represent that this information, including any third party information, is accurate or complete and it should not be relied upon as such. Opinions expressed herein reflect the opinion of Redhedge AM LLP and are subject to change without notice. No part of this document may be reproduced in any manner without the written permission of Redhedge AM LLP, however recipients may pass on this document but only to others falling within this category. This information should be read in conjunction with the relevant fund documentation which may include the fund's prospectus, simplified prospectus or supplement documentation and if you are unsure if any of the products and portfolios featured are the right choice for you, please seek independent financial advice provided by regulated third parties.

For Swiss investors:

The domicile of the Fund is Ireland. The Representative of the Fund in Switzerland is OpenFunds Investment Services AG, with its registered office at Seefeldstrasse 35, CH-8008 Zurich, Tel +41 44 500 3108, www.open-funds.ch. Società Bancaria Ticinese SA, Piazza Collegiata 3, 6501 Bellinzona, Tel. +41 91 821 51 21, Fax. + 41 91 825 66 18, www.bancaria.ch. The distribution of Shares of the Fund in Switzerland must be made exclusively to Qualified Investors. The place of performance and jurisdiction for the Shares of the Fund distributed in Switzerland is at the registered office of the Representative. Publications to Swiss investors in respect of the Shares of the Fund are effected on the electronic platform www.fundinfo.com.

RED HEDGE

Investor services:
Email:
Website:

+44 (0)20 3940 5626
info@redhedge.com
www.redhedge.com